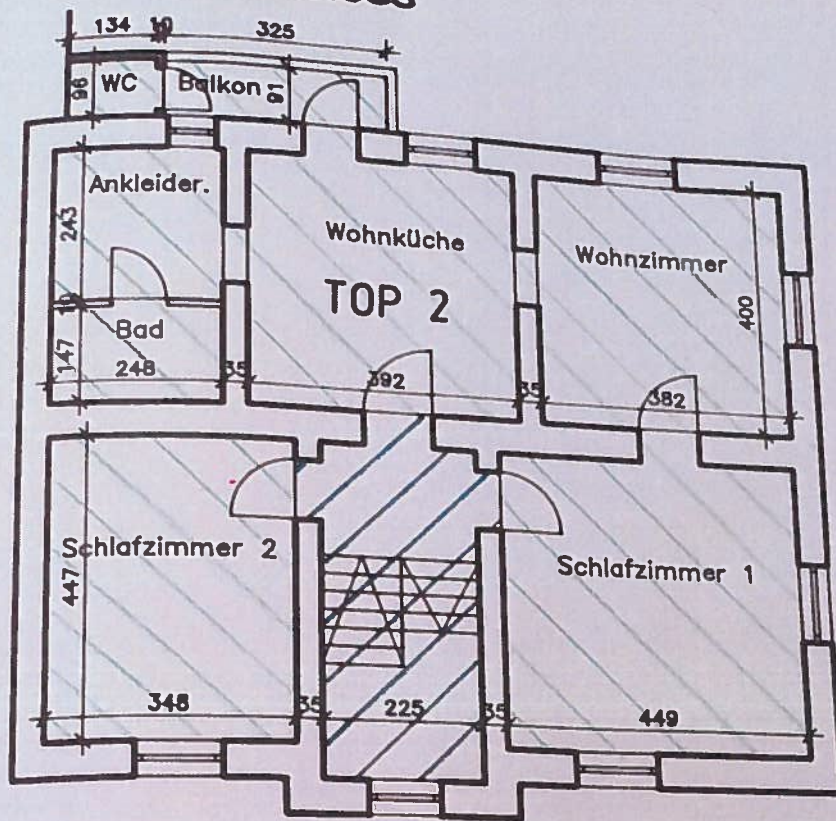
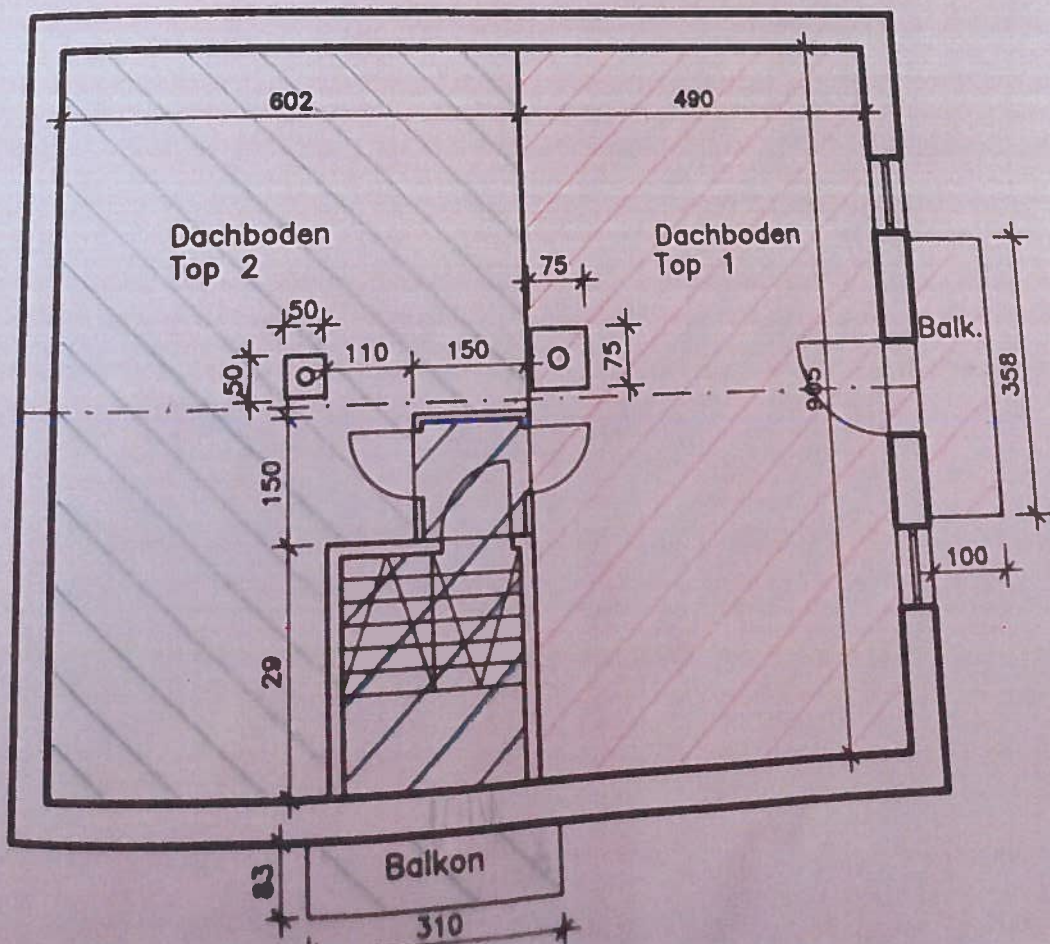


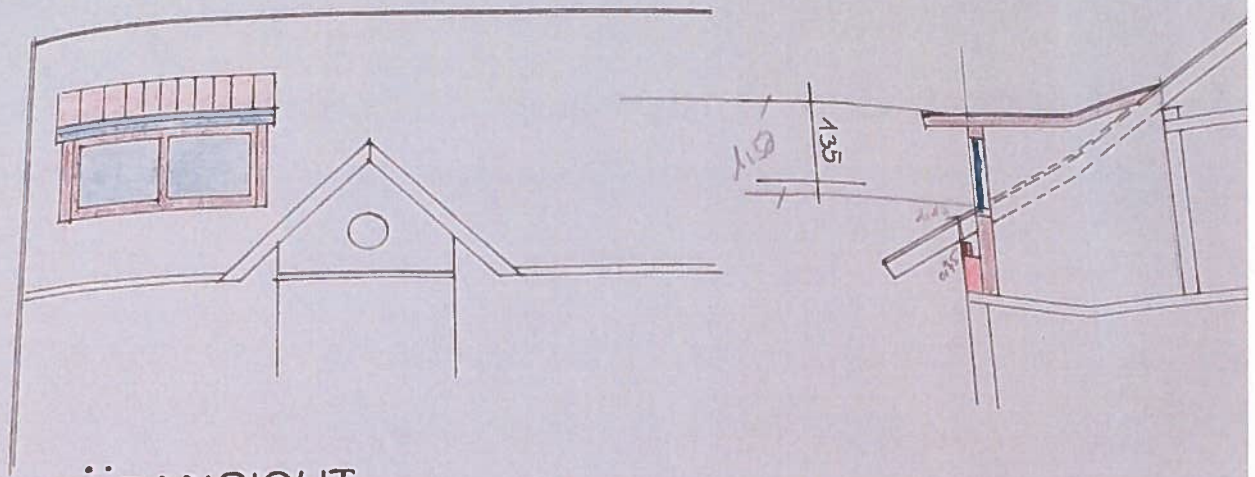
# 1. OBERGESCHOSS



# DACHGESCHOSS

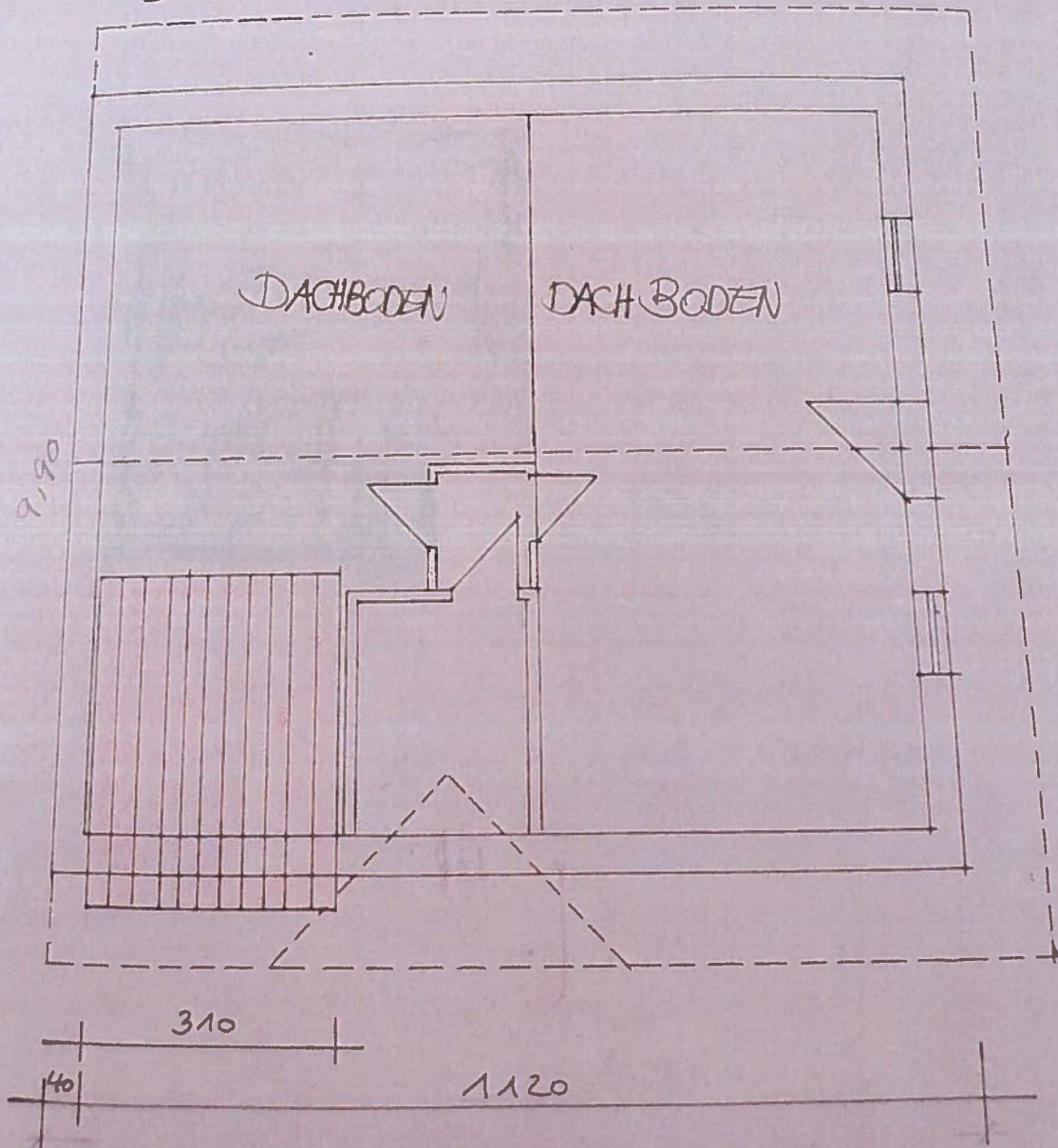






SÜDANSICHT

DACHGESCHOSS





## TOP 2

### Obergeschoß

Toilette	1,34 *	0,96 =	1,29 m2
Geschlossener Balkon	3,25 *	0,91 =	2,96 m2
Ankleideraum	2,48	2,43 =	6,03 m2
Bad	2,48 *	1,47 =	3,65 m2
Schlafzimmer 2	3,48 *	4,47 =	15,56 m2
Schlafzimmer 1	4,49 *	4,47 =	20,07 m2
Wohnzimmer	3,82 *	4,00 =	15,28 m2
Wohnküche	3,92 *	3,98 =	<u>15,60 m2</u>

80

### Zubehör:

Dachboden 2	3,42*9,05+1,10*6,15+1,50*4,65-0,5*0,5=	44,44	m2	9
Kellerabteil 2	3,30 *	1,85 =	6,11 m2	1
Balkon Süd	3,10 *	0,83 =	2,57 m2	1

## NUTZWERT TOP 2

91